

Rental Range

2024 Overall Rental Range and Options



permobil

About Permobil

At Permobil we put the people who use our products first. Our purpose is to innovate for individuals; to create and provide advanced assistive solutions that make the lives of people living with disabilities more enriching. Our dedicated teams work tirelessly to make this happen, no matter if they are designing a new wheelchair, testing seating cushions, or supporting a therapist.

Our founders were passionate about providing a better life for people with mobility impairments and that same passion still flows through everyone at Permobil. It drives us to push the boundaries of technology and our own ingenuity in pursuit of innovations that improve the quality of life of our users. Just as our users' needs constantly change, so we work continuously to tailor their Permobil products to meet their day-to-day reality.

Thanks to this, our users can trust that we provide market leading solutions, driven forward by working with insights based on clinical data – we call it evidence-based innovation.

At Permobil, we are leading change. We see ability. We are innovating for individuals.

Please note that this catalogue outlines our full range. We also have a specific catalogue to support bariatric users.

Our core values guide us in our response to our customers needs:



Tuatahi
User First



Hautūtanga
Leading



Whakawhirinaki
Trusted



Ngākau Whiwhita
Passionate

Contents

About Permobil	2
 Bed Range	4
 Mattress Range	8
 Overlay Range	13
 Power Wheelchair Range	15
 Power Assist Range	19
 Manual Wheelchair Range	20
 Backrest Range	24
 Cushion Range	25
 Chair Range	31
 Bathroom Range	35
 Manual Handling Range	39
Permobil Clinical Resources	42
FAQs and Contacts	43



Represents PHARMAC Contracted items. Visit their website by scanning:



Contact Us

Auckland Rental

Rental.NZ@permobil.com

0800 115 222

181A McLeod Road, Te Atatu South

Auckland 0610, New Zealand

Wellington Rental

RentalNZ.Nth@permobil.com

0800 363 123

15 Raroa Road, Hutt Central

Lower Hutt 5010, New Zealand

Christchurch Rental

RentalNZ.Sth@permobil.com

03 354 9239

3/114 Sawyers Arms Road, Northcote

Christchurch 8052, New Zealand

Permobil Contract Manager

Susie Ballantyne

Commercial Services Director

Susie.Ballantyne@permobil.com

021 246 1885

Bed Range

We have a range of beds available in single or king single sizes.

AC3 Bed

Code: BED AC3 

The AC3 bed is a three function bed tailored to the Aged Care environment.

- Three functions with LINAK electronics.
- Added comfort of a larger sleeping surface.
- Head and foot boards can be removed.
- Available in King Single.



Specifications	
SWL	220kg
Width	109cm
Length	212cm
Height	28.5cm - 68cm
Profiling Functions	3

Bariatric Floorline Bed - Big Ted

Code: BED BARI RENTAL 

The Big Ted Bed is a three function bed with a generous mattress platform, consisting of four panels.

- Fitted with twin actuators on back rest and knee bend functions, with pair of strong actuators at both ends of bed to raise/lower the mattress platform.
- Pump bracket is fitted to foot end tower to accommodate an alternating mattress.
- The bed can be folded for ease of transport.
- Available in King Single.



Specifications	
SWL	350kg
Width	107cm
Length	203cm
Height	13.5cm to 73.5cm
Profiling Functions	3

Bed Range

Botero Bariatric Bed

Code: BOTERO BARI BED 

The specific Bariatric design offers a width and length adjustable mattress platform to manage changing needs in both ward and respite environments.

- Low height of 38cm.
- Attendant control panel with intuitive pre-programmed single touch functions for speed.
- Central locking castors with integrated directional lock.
- Available in King Single.



Specifications	
SWL	400kg
Width	122cm
Length	226cm
Height	38cm - 85cm
Trendelenburg	+17 degrees/ -17 degrees
Profiling Functions	4

Community Care Bed

Code: BED COMMUNITY  BED RENTAL

Designed for the home environment with four profiling functions to suit all comfort and positioning needs.


- High-low.
- Combined backrest and knee bend.
- Four total-lock castors.
- Mattress retainers.
- TiMotion electronics.
- Available in Single.



Specifications	
SWL	180kg
Width	102.5cm
Length	214cm - 224cm
Height	22cm - 71cm

Bed Range

Floorline Bed - Rose II

Code: BED S FLOOR
BED KS 

The Rose II allows patients to be lowered to floor level and raised to a suitable height.

- Electrically operated backrest, knee break, raise/lower and tilt functions.
- Footend tower has built in keypad to operate bed and separate hand control comes standard.
- Bed can be folded for storage, transport and installation and fits through standard doorways.
- Available in Single or King Single.



Specifications	
SWL	220kg
Single	W 90cm x L 193cm
King Single	W 107cm x L 203cm
Height	12.5cm - 72cm
Profiling Functions	4

Walmsley Bed

Code: BED S WALMSLEY

The Walmsley range of healthcare beds are a commercial grade, electrically operated hi-low bed, which have been designed for maximum patient /carer safety and reliability.

- The electrical components are contained under the mattress platform for safety and protection while all critical moving parts are fitted with bronze bearings for a quiet and smooth operation.
- Wheels have both brake and directional lock, once the locking tab is engaged.
- An easy to operate coloured hand control is standard on all Walmsley beds.
- Easy to remove head and foot boards are standard.
- Available in Single.



Specifications	
SWL	250kg
Width	92cm
Length	196cm
Height	24cm - 74cm

Bed Range

Bed Accessories

These are available for most rental beds.

Code - BED EXT	Extension (where available)
Code - BED STICK RENTAL	Bed stick (P)
Code - BED RAILS RENTAL	Bed side rails - single or pair (P)
Code - SELF HELP RENTAL	Self-help pole (P)

Please note we can also supply IV poles and Oxygen bottle holders for some beds.



Mattress Range

Our mattresses are suitable for a range of support requirements, bed sizes and care environments.

Active Air BARI 10 Mattress Replacement

Code: ASPIRE BARI KS  ASPIRE BARI SKS 

- Adaptable Pump - can be switched between modes for users up to 160kg, and bariatric users up to 450kg.
- Integrated Turning Therapy - allows patient rotation up to 40° for improved pressure care, assists staff with patient handling requirements.
- Rapid Pump Inflation maximises therapy response times, minimises staff resources by fully inflating in only two minutes.
- Hospital Grade Cover - thicker weight polyurethane fabric with increased bleach resistance to handle modern hospital infection control standards.



Specifications	
SWL	450kg
King Single	107cm x 200cm
Super King Single	123cm x 200cm
Depth	27cm
Cell Cycle	1 in 2, 1 in 4
Cycle Time	10 / 15 / 20 mins

Forté Airmonte

Code: AIRMONTE

The Airmonte is easy to use and comfortable making it an ideal solution for any care environment aiding in the prevention and treatment of pressure injuries.

- Very quiet pump operation.
- Auto-adjust: Automatically adjusts pressure to suit patient weight.
- Auto-Firm: Switches to static mode and max-inflates to allow for easy repositioning and transfers.
- Light overall weight (9kg) allows ease of set-up and transportation.
- Available in Single.



Specifications	
SWL	30kg - 230kg
Width	87cm
Length	198cm
Depth	20cm
Cell Cycle	1 in 2
Cycle Time	10 / 15 / 20 / 25 mins

For more information, see the Forte Mattress Matrix, page 12

Mattress Range

QUATTRO® Acute Mattress System

Code: ACUTE  ACUTE KS 

- Features include Active QUATTRO THERAPY and Continuous Low Pressure Therapy modes, together with AUTOsupport fully automatic pressure adjustment and the unprecedented low interface pressures with DEEP CELL THERAPY.



Specifications	
SWL	250kg
Size	Dimensions (W x L x D cm)
Single	90cm x 198cm x 24cm
King Single	110cm x 198cm x 24cm
Number of Cells	27
Alternating Cycle	Variable
Active Therapy	1-in-4 Active Cell Cycle

QUATTRO® Plus

Code: PLUS 

- Clinically proven to provide pressure relief.
- Continuous Low Pressure therapy modes with AUTOsupport fully automatic pressure adjustment.
- Available in Single.



Specifications	
SWL	200kg
Size	Dimensions (W x L x D cm)
Size	88cm x 195cm x 18cm
Number of Cells	30
Alternating Cycle	16 minutes
Active Therapy	1-in-4 Active Cell Cycle

Mattress Range

Forté Zephair

Code: ZEPHAIR S, ZEPHAIR KS

Tried and trusted by facilities and homecare alike, the Zephair provides gentle critical care, aides in pressure injury prevention, pain management, comfort and compliance, stability, and safety.

- Silent ergonomic pump.
- 22 alternating air cells with Airoform Response Immersion Interface.
- Super shear inner cover.
- Premium firm foundation layer with profile stabilising sides.
- Available in Single or King Single.



Specifications	
SWL	30kg - 180kg
Size	Dimensions (W x L x D cm)
Single	88cm x 198cm x 21.5cm
King Single	105cm x 198cm x 21.5cm
Cell Cycle	1 in 2
Cycle Time	12 minutes

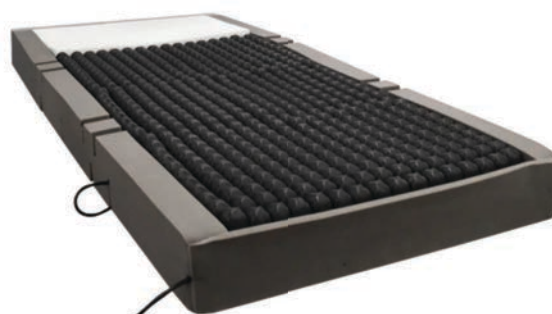
For more information, see the Forte Mattress Matrix, page 12

Forté Sovereign ROHO®

Code: SOV ROHO S, SOV ROHO KS

The Sovereign High Care mattress with integrated ROHO® DRY FLOATATION® Technology provides trusted and proven care for high to very high-risk clients requiring a static support surface that balances immersion, breathability, postural support, superior comfort, and outstanding performance.

- High-Temperature stability to deliver consistent immersion, performance and comfort.
- ROHO® valve extensions to allow pressure to be adjusted without opening cover resulting in minimising infection risk.
- Firm foundation layer with sloped heel pressure transfer zone and hinged strengthened sides.
- High-Performance, 4 zoned immersion region.
- The number of ROHO inserts can be adjusted between 1-4 depending on patient needs.



Specifications	
SWL	30kg - 275kg
Size	Dimensions (W x L x D cm)
Single	88cm x 198cm x 15cm
King Single	105cm x 198cm x 15cm

For more information, see the Forte Mattress Matrix, page 12

Mattress Range

Forté Alaise

Code: ALAISE S, ALAISE KS

The Alaise is an advanced Hybrid Static Care Support Surface combining together the pressure redistribution benefits of both foam and air, ideal for long-term care applications where maximum pressure care is required with virtually zero maintenance.

- 4 x Anatomically zoned air cell structure - Scapular, Pelvic, Thigh and Heel Zones.
- Premium firm foundation layer and hinged strengthened sides.
- A non-powered, self-regulating system - minimal or no training required for set up.
- High open-cell elasticity for temperate stability and to maximise functionality and patient mobility.



Specifications	
SWL	30kg - 300kg
Size	Dimensions (W x L x D cm)
Single	88cm x 198cm x 18.5cm
King Single	105cm x 198cm x 18.5cm

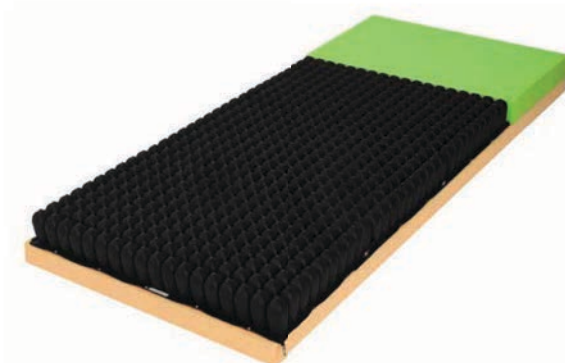
For more information, see the Forte Mattress Matrix, page 12

Modular Therapy Mattress (MTM)

Code: MTM S  MTM KS  MTM Q 

Full mattress replacement using a combination of foam and ROHO overlay sections.

- Modular system comprised of four overlay sections and foam base. The modular system allows a combination of ROHO overlay and high-quality foam sections to be used as required for comfort and stability.
- The ROHO overlay offers excellent pressure redistribution and minimises risk of shearing, while the foam base allows a 12.5cm overall height, similar to a standard mattress.
- The mattress features a two way stretch, vapour permeable, incontinence cover with welded seams. This fully fitted mattress cover complies with Hospital Infection Control protocols.
- The MTM mattress offers a REACTIVE surface and does not require a pump to maintain inflation.



Specifications	
SWL	275kg
Size	Dimensions (W x L x D cm)
Single	87cm x 198cm x 12.5cm
King Single	107cm x 202cm x 12.5cm
Queen	153cm x 202cm x 12.5cm

Forte Mattress Matrix

	Forté Airmonte	Forté Zephair	Forté Alaise	ROHO® Sovereign
PRODUCT TYPE	17 Cell 1 In 2 Alternating Air Full Mattress Replacement	22 Cell 1 In 2 Alternating Air Full Mattress Replacement	Hybrid Static Care Full Mattress Replacement	Hybrid Static Care Full Mattress Replacement
SUITABLE FOR	High - Very High Risk	High - Very High Risk	High - Very High Risk	High - Very High Risk
CODE	A8000AC - Single	ZAS1000 - Single ZAKS1000 - King Single	ALS1000# - Single ALKS1000# - King Single	PM-SRS1000 - Single PM-SRKS1000 - King Single
SWL	30 - 230kg	30 - 180kg	30 - 300kg	30 - 275kg
MATTRESS DIMENSIONS	Single 1980mm x 870mm x 203mm	Single 1980mm x 880mm x 215mm King Single 1980mm x 1050mm x 215mm	Single 1980mm x 880mm x 185mm King Single 1980mm x 1050mm x 185mm	Single 1980mm x 880mm x 185mm King Single 1980mm x 1050mm x 185mm
CUSTOMISABLE	Yes	Yes	Yes	Yes
WEIGHT*	9kg	12kg	15kg	12kg
LOW AIR LOSS	Yes - 8 ventilated cells in center region optimize micro-climate conditions	No	No	No
PUMP INCLUDED	Yes	Yes	No	No
PUMP DIMENSIONS	290mm x 310mm x 150mm	260mm x 240mm x 140mm	n/a	n/a
PUMP WEIGHT	3.4kg	2.3kg	n/a	n/a
POWER SUPPLY	AC 120V, 60Hz (for 120V system) AC 230V, 50Hz/60Hz (for 230V system)	AC 120V, 60Hz (for 120V system) AC 230V, 50Hz/60Hz (for 230V system)	A non-powered, self-regulating system	A non-powered, self-regulating system
OPERATING CYCLE	10, 15, 20, 25 minutes	12 minutes	n/a	n/a
FEATURES	Comfort level adjustment, low-pressure alert, alternating/static option, auto firm inflation, panel lock function, power failure alert, auto adjustment, and seat function	Ventilated Immersion upper layers, easy-to-use silent, ergonomic pump, super shear inner cover, premium firm foundation layer with profile stabilising sides	Integrated heel slope, support/anti-shear reservoir, self-regulating thigh cell, high support pelvic cell, self-regulating scapular cell	Airoform memory Immersion Interface, zoned Airoform response, profiled secondary immersion layer, supportive 3rd layer for postural comfort and transfer assistance, firm base support layer, integrated heel slope for pressure relief, available with 1 – 4 ROHO segments
FIRM SURROUND	No	Yes	Yes	Yes
ALERTS	Audible and Visual	Audible and Visual	No	No
COVER	Advantiflex Classic Premium Pressure Care Cover	Premiflex Ultra Pressure Care Outer Cover with Super Shear Inner Cover	Premiflex Ultra Pressure Care Outer Cover with Super Shear Inner Cover	Premiflex Ultra Pressure Care Cover
COVER MATERIAL	High Performance, Single Sided Polyurethane (PU1100) Upper Cover	Premiflex PFPU1100 Pressure Care Upper Material PFPU1200 Robust Heavy Duty Double Coated Breathable Base	Premiflex PFPU1100 Pressure Care Upper Material PFPU1200 Robust Heavy Duty Double Coated Breathable Base	Premiflex PFPU1100 Pressure Care Upper Material PFPU1200 Robust Heavy Duty Double Coated Breathable Base
FIRE RETARDANT	Meets BS 6807 Ignition source 5 and BS 7175 Ignition source 5 standards	Meets BS 6807 Ignition source 5 and BS 7175 Ignition source 5 standards	Meets BS 6807 Ignition source 5 and BS 7175 Ignition source 5 standards	Meets BS 6807 Ignition source 5 and BS 7175 Ignition source 5 standards
WARRANTY	Cover - 2 years Air cell system - 1 year Pump - 1 year	Foam core - 5 years Cover - 4 years Air cell system - 2 years Pump - 1 year	Foam core - 5 years Air cell system - 5 years Cover - 4 years	Foam core - 5 years Cover - 4 years Roho Air Cells - 2 years

* Based on single size mattress

Overlay Range

Please discuss sizing options with our rental team representative.

Bariatric ROHO® Overlay Kit

Code: OVERLAY BARI ROHO 

- No individual weight limit as long as assembled support surface sections are sized to fit the bariatric mattress and the individual.
- ROHO® DRY FLOATATION® overlay cell sections extend width of ROHO® DRY FLOATATION® overlay to fit bariatric bed sizes.
- The four sections of overlay are independently adjusted, providing low pressure environment over the entire contact area of body - available in 3, 4, or 5 cells wide.
- Add on sections help provide the bariatric individual with therapeutic benefits of ROHO® DRY FLOATATION® Technology.



ROHO® Dry Flotation Overlay System

Code: OVERLAY ROHO 

- The ROHO® DRY FLOATATION Overlay System mimics the pressure redistributing properties of water, creating the ideal environment for pressure injury prevention and healing.
- The system is not dependent on an electrical air pump and thus it produces no sound, heat or vibrations.
- This overlay is also modular and each of the four sections can be adjusted.



Overlay Range

ROHO® Dry Flotation Overlay – Single Section

Code: SECTION ROHO (P)

- Designed to address the needs of the mobility compromised patient by providing an environment in which the patient can comfortably lie or sit for long periods of time without the fear of compromised blood flow and the resulting effect of tissue damage and breakdown.



ROHO® Neonatal Isolette

Code: ISOLETTE ROHO (P)

- Interconnected air cells provide a low-pressure, low-shear environment for an at-risk infant.
- The non-powered, adjustable overlay fits standard hospital and home incubators.
- Two to four sections can be assembled to be used in larger paediatric beds.



Power Wheelchair Range

We have a selection of power wheelchairs to choose from, including early age mobility.

Permobil F5 Corpus VS

Code: PWC F5VS

Stand without compromise.

- We combined all of the performance features of the F5 Corpus with superior power standing wheelchair functionality.
- Fully programmable standing sequences allow user position to be optimised using supine, semi-reclined or sit to stand techniques.
- Further customise standing positions with adjustable anterior chest pad, moldable knee supports and power articulating footplates. From face-to-face interactions to improved health outcomes, the F5VS empowers you to explore the vast array of standing wheelchair benefits.



Specifications	
SWL	136kg
Seat Depth	14" - 22" (by 1" incr.)
Seat Width	17", 19", 21", 23"

Permobil M1

Code: PWC M1 

One chair, endless options.

- The M1 provides a solution for those users who require a traditional rehab-style seating system with limited to no power seat functions and comes with a backrest frame allows the mounting of virtually any seating and positioning solution.
- The suspension geometry and linear spring design provide a more stable chassis while the vibration-dampening FlexLink™ ensures a smooth ride over a variety of terrain.
- You can feel confident that your chair can withstand the rigors of an active lifestyle.



Specifications	
SWL	136kg
Seat Depth	14" - 22" (by 2" incr)
Seat Width	14" - 22" (by 1" incr.)

Power Wheelchair Range

Permobil M3 Corpus

Code: PWC M3

Navigate tight spaces.

- Meticulously engineered to help you maintain better positioning, feel more secure and reduce driving fatigue so you can conquer daily activities with ease.
- The compact base of the M3 offers maneuverability in tight spaces without sacrificing performance.
- Featuring the innovative FlexLink suspension and Permobil's industry-leading Corpus Seating System with ActiveHeight and ActiveReach forward tilt technology.



Specifications	
SWL	150kg
Seat Depth	14" - 22" (by 1" incr)
Seat Width	17", 19", 21", 23"

Permobil M5 Corpus

Code: PWC M5

Made for More.

- Take control with high-performance motors enabling exceptional low-end torque that lets you pivot like a pro.
- The FlexLink Pro suspension will take your ride comfort to the next level with an additional drive-wheel shock for even greater vibration reduction.
- The M5 comes with Permobil's industry-leading Corpus Seating System, including ActiveHeight and ActiveReach forward tilt technology.



Specifications	
SWL	150kg
Seat Depth	14" - 22" (by 1" incr)
Seat Width	17", 19", 21", 23"

Power Wheelchair Range

Permobil M300 HD Corpus

Code: PWC M300HD 

Heavy duty meets comfort.

- The M300 base is highly maneuverable. The suspension has been strengthened and base extended for a more stable platform.
- Extremely sturdy arm and legrests, wider footplates to create additional room and comfort.
- Corpus seating system for the ultimate in comfort with unmatched power tilt range of 0 - 45° and unprecedented recline of 85 - 150°.
- Ultra-strong actuators allow the user to safely elevate their feet above their hearts, while durable mesh-style upholstery helps keep moisture away from the body.



Specifications

SWL	204kg
Seat Depth	9" - 25" (by 1" incr.)
Seat Width	19", 21", 23", 25"

Permobil K300 PS Jr and Koala R-Net

Code: HPW PAED

- K300 PS Jr - Paediatric Range.
- Climbing and Traction Link System (Catlink).
- Power Seat Elevator & Power Tilt Functions.
- Koala R-Net - Paediatric Range.
- Low Seat-to-Floor Height.
- R-Net Electronics.



Specifications - K300 PS Jr

SWL	75kg
Seat Depth	10" - 18"
Seat Width	11" - 16" (by 1" incr.)

Specifications - Koala R-Net

SWL	35kg
Seat Depth	10", 12", 14"
Seat Width	10", 12", 14"

Power Wheelchair Range

Permobil Explorer Mini

Code: EXPLORER 

Independence through exploration.

- The Explorer Mini is a regulatory cleared powered mobility solution that facilitates self-initiated movement and early exploration for young children with mobility impairments.
- Designed to support on-time development, the Explorer Mini is an ergonomic device with multiple weight bearing surfaces to help promote safe, stable upright postures while providing opportunities to improve strength, endurance and postural control.



Power Assist Range

We offer power assist devices to complement manual wheelchairs.

SmartDrive

Code: HPA SD

- SmartDrive's intuitive controls add a power assist for a variety of manual wheelchair scenarios like cruising up hills or over thick carpets.
- The lightweight design attaches quickly and the unique omni-wheel design moves with the user - pivot, turn, wheelie, and navigate curbs in style.
- The SmartDrive is lightweight and easy to install on virtually any make and model of manual wheelchair including folding, tilt-in space, one-arm drive and standing.
- At only 5.7 Kg, the MX2+ is easily attached or removed from the back of your chair, making it the perfect on-demand addition to your mobility.



BATEC Handbike

Code: BATEC + (MODEL)

- BATEC radically improve the mobility of people with disabilities to match their lifestyle.
- Batec handbikes are designed by and for disabled people.
- Our range includes the Mini, Electric, Scrambler, Rapid and Hybrid.
- Also available for quadriplegics and hemiplegics.





Manual Wheelchair Range

We have a selection of chairs to support varying needs.



TiLite TRA and TiLite ZRA

Code: HWC TC1

- TiLite TRA - Titanium Rigid Dual-Tube Frame.
- Full Adjustability with TruFit System.
- TiShaft Back Release Bar.
- TiLite ZRA - Titanium Rigid Mono-Tube Frame.
- Full Adjustability with Tru-Fit System.
- TiShaft Back Release Bar.

Specifications - TiLite TRA

SWL	120kg, HD 159kg
Seat Width	12" - 20"
Seat Depth	12" - 20"

Specifications - TiLite ZRA

SWL	120kg, HD 136kg
Seat Width	10" - 20"
Seat Depth	10" - 20"

TiLite Aero X and TiLite Aero Z

Code: HWC TC2 

- TiLite Aero X - Aluminium Modular Folding Frame.
- Full Adjustability with Tru-Fit System.
- Snap-In Seat Saddles.
- TiLite Aero Z - Aluminum Rigid Mono-Tube Frame.
- Full Adjustability with Tru-Fit System.
- TiShaft Back Release Bar.

Specifications - TiLite Aero X

SWL	120kg, HD 156kg
Seat Width	12" - 22"
Seat Depth	12" - 22"

Specifications - TiLite Aero Z

SWL	120kg
Seat Width	10" - 20"
Seat Depth	10" - 20"

Evoke 2

Code: WCFOLD 

- Designed for the user who wants a lightweight, highly adjustable manual wheelchair.
- Folding frame.
- Quick release 24" solid rear tyres. The wheels are easily removed to reduce the weight of the chair for transport and storage.
- Comprehensive range of compatible accessories.



Specifications

SWL	140kg
Seat Width	14" - 20"
Seat Depth	16" - 19"

Manual Wheelchair Range

Evoke 2 HD

Code: WCFOLDHD 

- Designed for the larger user who wants a lightweight, highly adjustable manual wheelchair.
- Folding Frame.
- Highly adjustable, lightweight, aluminium wheelchair.
- Comprehensive range of compatible accessories is available for increased independence and enhanced clinical outcomes.



Specifications	
SWL	180kg
Seat Width	22" - 24"
Seat Depth	16" - 19"

Evoke 2 Junior

Code: WCFOLD JNR 

- Designed to promote independent manoeuvring and handling by juniors, while making lifting and handling a breeze for parents and caregivers
- Folding frame.
- Swing away and removable arm and legrests.
- The wheels are easily removed to reduce the weight of the chair for transport and storage.



Specifications	
SWL	140kg
Seat Width	12"
Seat Depth	12" - 15"

Minimaxx

Code: WCMINIMAX RENTAL HD

- Large rear wheels, with solid rubber tyres and hand rims, designed to give patients the option of manoeuvring and propelling themselves.
- Folding frame.
- Each rear wheel fitted with hand operated wheel brake to secure the Minimaxx when parked.
- Footrests designed to carry 100kg each.



Specifications	
SWL	325kg
Seat Width	61cm
Seat Depth	48cm

Manual Wheelchair Range

Transit

Code: WCTRANSIT 

- Versatile and robust transport wheelchair propelled by an attendant or carer.
- Swing away and removable arm rests. This facilitates user transfers and also makes for easier transport and storage.
- Height adjustable, removable foot rests.
- Quick release 12" solid rear tyres. Wheels are easily removed to reduce weight of the chair for transport and storage
- Various accessories available to suit the needs of individuals and carers.



Specifications

SWL	140kg
Seat Width	16" - 20"
Seat Depth	16"

Tilt in Space

Code: WCTILT 

- Designed for the more complex user, who requires assistance with positioning, re-positioning and skin management.
- Tilt (26°) and backrest recline (30°).
- Contoured, built-up backrest and seat cushion.
- Depth and width adjustable seat sizing. Height adjustable and removable armrests. Adjustable headrest.

Code: WCTILT JNR 

The Rehab RX Junior is designed for the increased postural support and pressure care of children, via easy repositioning and advanced adjustability.

- Highly adjustable. Depth and width adjustable seat sizing, height adjustable, removable armrests, adjustable headrest.
- Tilt (26°) and backrest recline (30°).
- Contoured, built-up backrest and seat cushion.
- Advanced articulating leg rests closely mimic normal movement at the knee upon elevation.



Specifications - Tilt in Space

SWL	180kg
Seat Width	16" - 20"
Seat Depth	17" - 21"

Specifications - Tilt in Space Junior

SWL	180kg (paediatric)
Seat Width	13" - 15"
Seat Depth	13" - 15"

Manual Wheelchair Range

Wheelchair Accessories

These are available for most wheelchairs. We have many options so please discuss these with us.

Code - ELEVATING-LEG-WC RENTAL Elevating Leg Rest 

Code - GUTTER-ARM-WC RENTAL Gutter Arms 

Code - STUMP-SUPPORT-WC RENTAL Stump Support 

Code - GUTTER FRAME

Code - HARNESS

Code - SAFETY BELT



Backrest Range

Please discuss sizing options with our rental team representative.

ROHO® AGILITY® Back System

Code - BR AGILITY

- Provides significant amount of posterior and lateral trunk support and control for optimal posture and stability.
- Recommended for clients who need postural support and deep, mid-thoracic trunk support.
- Lightweight and designed to conform to the user's body.
- Air insert is fully adjustable for comfort levels and postural needs.
- Available in various sizes.



Dreamline Backrest System

Code - BR DREAMLINE

- Designed to provide high levels of adjustability.
- Available in various sizes.



Cushion Range

Permobil proudly supplies the ROHO® range of cushions, which are designed to move with the body and constantly adapt to the changes that happen throughout each day and over time.

Chair Size (Width x Depth)	Number of Cells	Chair Size (Width x Depth)	Number of Cells
12" x 12" - 30cm x 30cm	6w x 6d	16" x 18" - 41cm x 46cm	9w x 10d
12" x 13" - 30cm x 33cm	6w x 7d	16" x 20" - 41cm x 51cm	9w x 11d
13" x 13" - 33cm x 33cm	7w x 7d	17" x 17" - 43cm x 43cm	9w x 9d
13" x 15" - 33cm x 38cm	7w x 8d	18" x 15" - 46cm x 38cm	10w x 8d
13" x 16" - 33cm x 41cm	7w x 9d	18" x 16" - 46cm x 41cm	10w x 9d
14" x 14" - 36cm x 36cm	8w x 8d	18" x 18" - 46cm x 46cm	10w x 10d
14" x 16" - 36cm x 41cm	8w x 9d	18" x 20" - 46cm x 51cm	10w x 11d
15" x 13" - 38cm x 33cm	8w x 7d	20" x 16" - 51cm x 41cm	11w x 9d
15" x 15" - 38cm x 38cm	8w x 8d	20" x 18" - 51cm x 46cm	11w x 10d
15" x 16" - 38cm x 41cm	8w x 9d	20" x 20" - 51cm x 51cm	11w x 11d
15" x 18" - 38cm x 46cm	8w x 10d	22" x 18" - 56cm x 46cm	12w x 10d
15" x 20" - 38cm x 46cm	8w x 11d	24" x 18" - 61cm x 46cm	13w x 10d
16" x 15" - 41cm x 38cm	9w x 8d	24" x 20" - 61cm x 51cm	13w x 11d
16" x 16" - 41cm x 41cm	9w x 9d		

ROHO® Select Series

Code: CUSHION ROHO (select size and profile) 

- The QUADTRO SELECT® and CONTOUR SELECT® cushions feature four independent compartments of air cells for an individualised fit, each controlled by our exclusive ISOFLO® Memory Control.
- ROHO's ISOFLO® Memory Control, located at the front of all Select Series cushions, allows air to flow through the cushion in two ways.



LOW PROFILE

The interconnected air cells deliver sitting stability. It could be used as a secondary cushion.



MID PROFILE

The mid-sized interconnected air cells deliver the ideal combination of customisable positioning and stability.



HIGH PROFILE

The tall, interconnected air cells envelop your body, delivering maximum immersion for the ultimate in skin protection, positioning, stability and comfort.

Cushion Range

Bariatric ROHO® Cushion

Code: CUSHION ROHO BARI 

Sizes: 12 (22"), 13 (24"), 14 (26"), 15 (28")

- QUADTRO SELECT is the most clinically advanced cushion in the ROHO product family, constantly adapting to needs or activities. The exclusive ISOFLO Memory Control and independent four-compartment design provides the ultimate control over the inflation levels across the cushion, making it easy to ensure proper positioning.
- The interconnected air cells envelop the body, delivering maximum immersion and positioning, while protecting from skin and soft tissue breakdown.



Adaptor Pad

Code: CUSHION ADAPTOR 

- The self contained air cells in the ADAPTOR Pad can be used as an interface on virtually any flat or contoured surface to protect skin and soft tissues.
- Especially useful when cut to fit various surface shapes such as sides of wheelchairs, trays, head and foot rests, inside of helmets, or for any surfaces that may need protection.
- Size - Width 9.5" x Depth 13".



ROHO® Airlite Cushion

Code: CUSHION AIRLITE

- Non-adjustable, maintenance free foam cushion with a ROHO air insert that conforms to the body while also preventing bottoming out.
- The gentle contour of the leg trough helps maintain the right position and posture to feel more secure.
- Size - Width 16" - 18" x Depth 16" - 18".



Cushion Range

Dreamline Assist Cushion

Code: CU ASSIST

- For users who have reasonable stability and skin integrity.
- Comfortable solution for full time wheelchair users who have good stability but still have pressure risk management needs.
- Modifications are also available.



Dreamline Contour Cushion

Code: CU DREAMLINE

- Maximum user weight - 120kg.
- The Dreamline CONTOUR Cushion offers excellent weight distribution and stability.
- It is a comfortable solution for full time wheelchair users who have reduced stability and low-to-moderate risk of skin breakdown.
- Modifications are also available.



ROHO® Mosaic Cushion

Code: CU MOSAIC

- Interconnected large air cells.
- Easy to inflate, lightweight cushion that protects skin and soft tissues.



Cushion Range

ROHO® Toilet Seat Cushion

Code: TOILET SEAT ROHO (P)

- The adjustable, air filled cellular neoprene surface is designed for short term use on toilets and portable bedside commodes.
- It snaps easily into place and is easy to clean and disinfect.
- Size - Width 18" x Depth 18".



ROHO® Shower/Commode Cushion

Code: COMMODE ROHO (P)

- Adjustable, air filled Shower/Commode cushion provides much needed cushioning and protection for bedside commodes and shower wheelchairs.
- Designed for use without a cover, the cushion is easy to clean and disinfect.



ROHO® Heal Pad Cushion

Code: HEEL ROHO (P)

- Support feet in an adjustable, therapeutic environment that reduces shear and friction on the heel.
- By supporting the most high risk pressure points, the pad protects from injury and facilitates healing.



Cushion Range

ROHO® Head/Neck Pillow

Code: PILLOW ROHO 

- A DRY FLOATATION® O.R. (operating room) product that cushions the head while minimising risk of pressure injury development during surgical procedures.
- Size - Width 10" x Depth 12".



ROHO® Recliner

Code: RECLINER ROHO 

- The ROHO Recliner System with DRY FLOATATION® Technology provides back and seating surface protection.
- Size - Width 18" x Depth 18".



ROHO® FAQs

How do I know if a ROHO® is correctly inflated?

If you received a user manual with the ROHO product, please refer to this. There may also be instructions inside the box your cushion or mattress came in.

If you did not receive a manual, do a search on our website for the relevant manual.

www.permobil.com/en-nz

The ROHO® keeps going flat – what should we do?

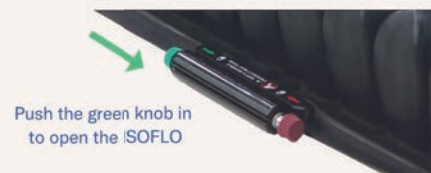
Firstly, check the valve(s) on the ROHO cushion – is this closed? If the valve is closed (and is remaining closed during the day) the ROHO may have a puncture. We recommend that you seek assistance from the clinician or supplier who supplied you with the cushion as soon as possible.

When I inflate the cushion, all the air remains in one corner of the cushion – what is going on?

This cushion is likely to be a ROHO Quadtro Select cushion.

This cushion has an isoflo valve to limit air movement through the cushion. This cushion may need to be "reset".

If you are unsure how to do this, please contact the cushion issuer.



The cushion and cover are soiled – can we wash them?

Yes! Please see the cleaning instructions or user manual provided. Alternatively, use this QR code below to access our cleaning video on YouTube.



What covers can we use on the ROHO® cushion or mattress section?

For cushions, please use the cover provided only. If keeping the cover clean is an issue, please request a second cover.

For mattress sections, please take care with bed linen used. Ideally, use a sheet with some stretch or a loosely fitted sheet to allow the person to immerse into the mattress section. Use of incontinence sheets is to be avoided if possible, as these will reduce the pressure relieving qualities of the cushion or mattress section.

What is the weight limit on a ROHO® cushion or mattress overlay?

There is no weight limit on a ROHO cushion or mattress, if appropriately sized.

Chair Range

Our chair range provides additional comfort and support for a wide variety of users.

XXL Rehab Dining Chair

Code: BARI DINING RENTAL 

- The arm rests bend out like a butterfly, so body is not squeezed when getting in/out of the chair.
- Dining chair also provides better functionality for the user, compared to other chairs with straight and short armrests where it is almost impossible for a bariatric user to get a good grip.



Specifications	
SWL	325kg
Seat Size	W 61cm/71cm D 40-52cm
Seat Height	44cm-59cm

Support Chair - Bariatric Chair Multiline XXL

Code: BARI TXCHAIR 

- Useful for patient transport, examination and treatment and post-op recovery.
- Capable of multiple positions, including lay flat position.
- All adjustments electronically controlled.



Specifications	
SWL	300kg
Seat Size	W 70cm x D 57cm
Overall Width	89cm

Chair Range

Mobile Air Chair

Code: CLOUD ASPIRE 

- The unique design promotes skin immersion and envelopment.
- Pressure on the skin's surface is re-distributed, reducing the risk of pressure injury associated with prolonged sitting or lying.
- Ideal for clinical and aged care environments.



Specifications	
SWL	180kg
Seat Size	W 47cm - 51cm x D 52cm

MAXI Deluxe V2 Cloud Chair

Code: CLOUD BARI (ELECTRIC) 

The Maxi Deluxe V2 Cloud Chair offers ease of handling for carers and maximum comfort for patients.

- Power assisted tilt of backrest, seat and leg rests.
- Adjustable seat (tilt in space).
- Adjustable back, upright seated to full recline sleep position.
- Adjustable wings and drop-down arms for easy transfer.
- Adjustable leg support with optional foot rest.
- Locking castors - 3 x standard / 1 x directional.



Specifications	
SWL	300kg
Seat Size	W 72cm x D 55cm
Overall Size	W 95cm x D 95cm x H 138.5cm

Chair Range

Recliner

Code: CLOUD MEURIS RENTAL 

- Comfortable and easy-care solution for elderly or specific needs seating.
- Cushioned adjustable air support and shear resistant upholstery to support pressure care management.
- Lockable and directional castors.



Specifications	
SWL	125kg
Seat Size	W 48cm x D 45-55cm

Maxi Day Chair

Code: MAXI BARI 

- Seat with Anterior Tilt. Facilitates standing from sitting and provides greater comfort for stiff or painful hips.
- Height Adjustable. Easy push button adjustment for comfortable positioning and changing needs. Depth and backrest height adjustable with ease.
- Push handle and transport wheels. Allows a carer to tilt the chair backwards on the rear leg wheels for ease of transport (without a patient in the chair).



Specifications	
SWL	310kg
Seat Width	60cm - 81cm
Seat Depth	39cm - 53cm

Chair Range

Air Lift Chair

Code: LAZYBOY ASPIRE 

- Unique design promotes skin immersion and envelopment.
- Pressure on the skin's surface is redistributed, reducing the risk of pressure injury associated with prolonged sitting.
- Ideal for clinical and aged care environments.
- The rise function and leverage grips promote increased user independence in sit to stand transfers whilst the recline function allows a relaxed position in times of user fatigue.



Specifications	
SWL	140kg
Seat Width	45cm - 51cm
Seat Depth	46cm - 51cm

Bariatric Electric Rise and Recline

Code: LAZYBOY BARI

- Ideal solution for heavier weight users, with progressive conditions, who require pressure care management, who have Oedema legs or fluid build-up in legs, who have difficulty in stand to walk position.



Specifications	
SWL	255kg
Size	Dimensions (W x D x H cm)
Large	71cm x 56cm x 46cm
X-Large	76cm x 56cm x 46cm

Bathroom Range

We have a variety of options to support users in bathrooms or wet areas.

Bariatric Shower Commode

Code: BARI COMMODE 

- Super heavy duty bariatric design.
- Anti-bacterial frame coating for improved infection control.
- Removable arms to assist with positioning and allow lateral slide transfers.
- Height adjustable, swing away footrests for optimal positioning and ease of transfers.
- Padded seat and arms for maximum comfort.



Specifications	
SWL	350kg
Seat Size	W 79cm x D 55cm
Overall Width	90cm

XXL Rehab Shower Bench

Code: BARI SHOWERBENCH 

- Strongly engineered and functionally designed exclusively for bariatric users.
- The height of the chair is adjustable from 44cm to 59cm.
- Also available as a commode with pan.



Specifications	
SWL	325kg
Seat Size	W 61cm x D 40-52cm
Overall Width	69cm

Bathroom Range

Weight Bearing Platform Shower Commode

Code: BARI SHOWERCOM 



- Heavy duty reinforced wide frame.
- 4 x total locking stainless steel castors provide brake access from all angles.
- Height adjustable reinforced armrests offer drop flat positioning to assist with lateral slide transfers.
- Weight bearing platform.
- The footrest slides completely away for transfers



Specifications

SWL	400kg
Seat Size	W 60cm x D 48cm
Overall Width	75cm

MAXI Shower Commode

Code: MAXI 50 SP COMMODE 
MAXI 65 SP COMMODE 

Durable and long lasting with a stainless steel frame, impervious PVC straps and water resistant castors.

- Simple to use swing up arms with padded arm rests and adjustable height swing away foot rests.
- Back rest with three flexible straps for comfort.
- Integrated push handle.
- 12.5cm braking castors.
- Durable and long lasting with a stainless steel frame, impervious PVC straps and water resistant castors.



Specifications - MAXI 50

SWL	150kg
Seat Size	W 50cm x D 43cm

Specifications - MAXI 65

SWL	300kg
Seat Size	W 65cm x 48cm

Bathroom Range

Shower Commode for Children

Code: PAED SP COM  PAED T COM 

- Can be used for showering and/or over toilets.
- Integrated push-handle for manoeuvrability.
- Swing-up arms for unrestricted side transfer.
- Swingaway and removable height adjustable footrest.
- 4 x total locking castors



Specifications	
SWL	125kg
Seat Size	W 32cm x D 32cm

24" Self Propelled Shower Commode Chair

Code: SHOWERCOM CLEAN RENTAL 

- Wheels are positioned for ease of movement of the chair without compromising user safety or comfort.
- Easy to transfer to and from the chair due to the large, unrestricted seat in front of the wheels.
- The brake handles are positioned below the seat so that they do not get in the way during transfer, while remaining easy to reach. Allows the user to operate the chair independently.



Specifications	
SWL	132kg
Seat Size	W 48cm x D 44cm

Bathroom Range

Shower Commode Maxi Tilt (Electric)

Code: SHOWERCOM ETILT 

- Assists transportation and positioning of the larger user for showering and can be positioned over the toilet for toileting.
- Electric tilt-in-space mechanism allows the carer to adjust the vertical position from 0° to 30° ensuring user comfortably retains correct seating position.
- Large calf pads to support the legs.
- Large backrest with headrest extension to support the upper body and head.



Specifications	
SWL	225kg
Seat Size	W 60cm x D 47cm
Overall Width	71cm

Tilt and Recline Shower Commode

Code: SHOWERCOM TILT 

- 30° of backrest angle adjustment in 10° increments for effortless repositioning and maximum user comfort.
- -5° to 35° of gas-assisted tilt-in-space functionality minimises manual handling efforts during showering process.
- 4x total locking stainless steel castors provide brake access from all angles.



Specifications	
SWL	250kg
Seat Size	W 46cm x D 53cm
Overall Width	63cm

Commode Accessories (where available)

Code - COMM ELR Hire Elevating legrest for Aspire Commode
Code - HR COM RENTAL Headrest for commode

Manual Handling Range

Our manual handling range supports confident and comfortable movement and transfers.

MAXI Walking Tutor Frame

Code: MAXI WALKER 

- SWL - 250kg.
- Rigid, fully welded, four wheeled, mobile walking frame with adjustable height forearm supports with upright foam padded handles.
- Supports also adjust in cuff length and angle.
- Frame has swivel front castors and rear wheels or optional glides.
- Padded chest and arm rest is available as an option.



Hoist (200kg) - Standing Patient Lifter

Code: HOISTA200S RENTAL 

- SWL - 200kg.
- Compact, lightweight and manoeuvrable standing lifter ideal for home, community and facility environments.



Hoist (320kg) - Aluminium Bariatric Lifter

Code: HOISTA320 RENTAL 

- SWL - 320kg.
- The broad base and ample patient clearance compliments the substantial safe working load.



Manual Handling Range

Standing Hoist

Code: HOIST NOVA  HOIST NOVA STAND 

- SWL - 180kg.
- Intended for users with some weight bearing capacity.
- Low height means users can place their feet onto the footplate.
- Large lifting span.
- Compact hoist open available.



Slings for Hoists

Code: SLING  SLING RENTAL

- Our range includes general purpose and bariatric slings with or without head support, hygiene slings for toileting and dressing, all-day slings for those who need to remain in their sling for extended periods and standing slings for patients who can bear weight.
- Size: XS, S, M, L, XL.



Manual Handling Range

Knee Scooter

Code: KNEE SCOOTER

- The knee scooter is designed for lower limb recovery.



Swift Patient Mover

Code: SWIFT MOVER

- SWL - 185kg.
- Compact standing aid that facilitates standing and transfers in the home, community and facility environments.
- Users are encouraged to stand up independently, improving circulation, breathing and muscle strength.
- An ideal alternative to a patient lifter for users with appropriate sitting balance, who require transfers over greater distances.



Transfer Support

Code: TRANSFER BENCH, TRANSFER BOARD

- Supports easy and efficient transfers.



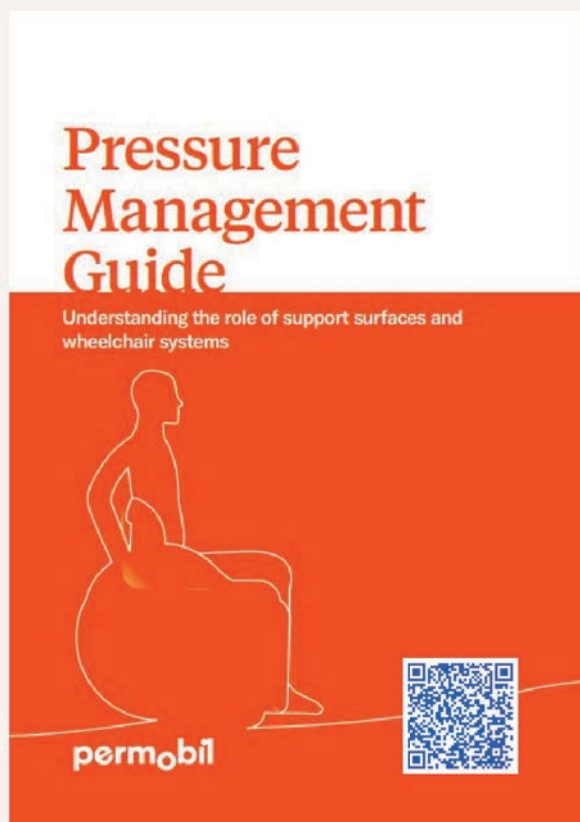
Permobil Clinical Resources

Our rental team work closely with clients and mobility experts to ensure that suggested products will meet the identified needs and genuinely support the user effectively. We recommend that you speak to your clinician or therapist to further understand the benefits of products and best use of them.

The below clinical resources are free to access for all healthcare professionals and consumers. Simply scan the QR codes to download.

This purpose of these guides are to:

- Foster a more holistic approach to the management and prevention of pressure injuries (PI) by simultaneously treating supine and seated postures.
- Review and adopt the International Clinical Practice Guideline (CPG) as published by the Pan Pacific Pressure Injury Alliance (PPPIA).
- Adopt key recommendations from the PPPIA's CPG when considering support surfaces and/or seating components.
- Understand the critical role wheelchair configuration and equipment choices play in the prevention and treatment of pressure injuries.
- Intended as brief overviews and are best used in conjunction with the full 2019 International Clinical Practice Guideline and the free abridged Quick Reference Guide.



FAQs and Contacts

Which areas of New Zealand do you support?

We provide a nationwide service. Our three branches are based in Auckland, Wellington and Christchurch. We deliver within a large radius of those sites and can ship to all regions. Call our team to discuss options.

What if I get the item and it's not quite right?

This happens from time to time – simply call our team, explain the issue and they'll work with you to identify a solution.

What are your charges?

Once our team confirm the product(s), charges will be set out and discussed. These include a daily rental rate, alongside delivery and collection charges (where applicable). A quote is provided before confirmation of the hire. There are various payment options depending on needs, which the team can discuss with you.

What if we need training or further product information?

Discuss this with the team when you are in contact – we provide training to ensure users receive maximum benefit from rental products.

Pharmac: Items marked with  are listed on Pharmac Contract PML-2019-12-12

Contact Us

Auckland Rental

Rental.NZ@permobil.com

0800 115 222

181A McLeod Road, Te Atatu South

Auckland 0610, New Zealand

Wellington Rental

RentalNZ.Nth@permobil.com

0800 363 123

15 Raroa Road, Hutt Central

Lower Hutt 5010, New Zealand

Christchurch Rental

RentalNZ.Sth@permobil.com

03 354 9239

3/114 Sawyers Arms Road, Northcote

Christchurch 8052, New Zealand

Permobil Contract Manager

Susie Ballantyne

Commercial Services Director

Susie.Ballantyne@permobil.com

021 246 1885



permobil

BR-NZ-RENT-CAT-01.0

www.permobil.com/en-nz